



# The “*EUPHORIC*” Project

---

Roberto Elosua, MD, PhD

Lipids and Cardiovascular Epidemiology Unit  
Institute of Medical Research, Barcelona



# Municipal Institute of Medical Research - IMIM

---

- Non-profit public research institution.
- Settled in Barcelona.
- Main areas or research:
  - Epidemiology
  - Pharmacology
  - Molecular Biology
  - Bioinformatics



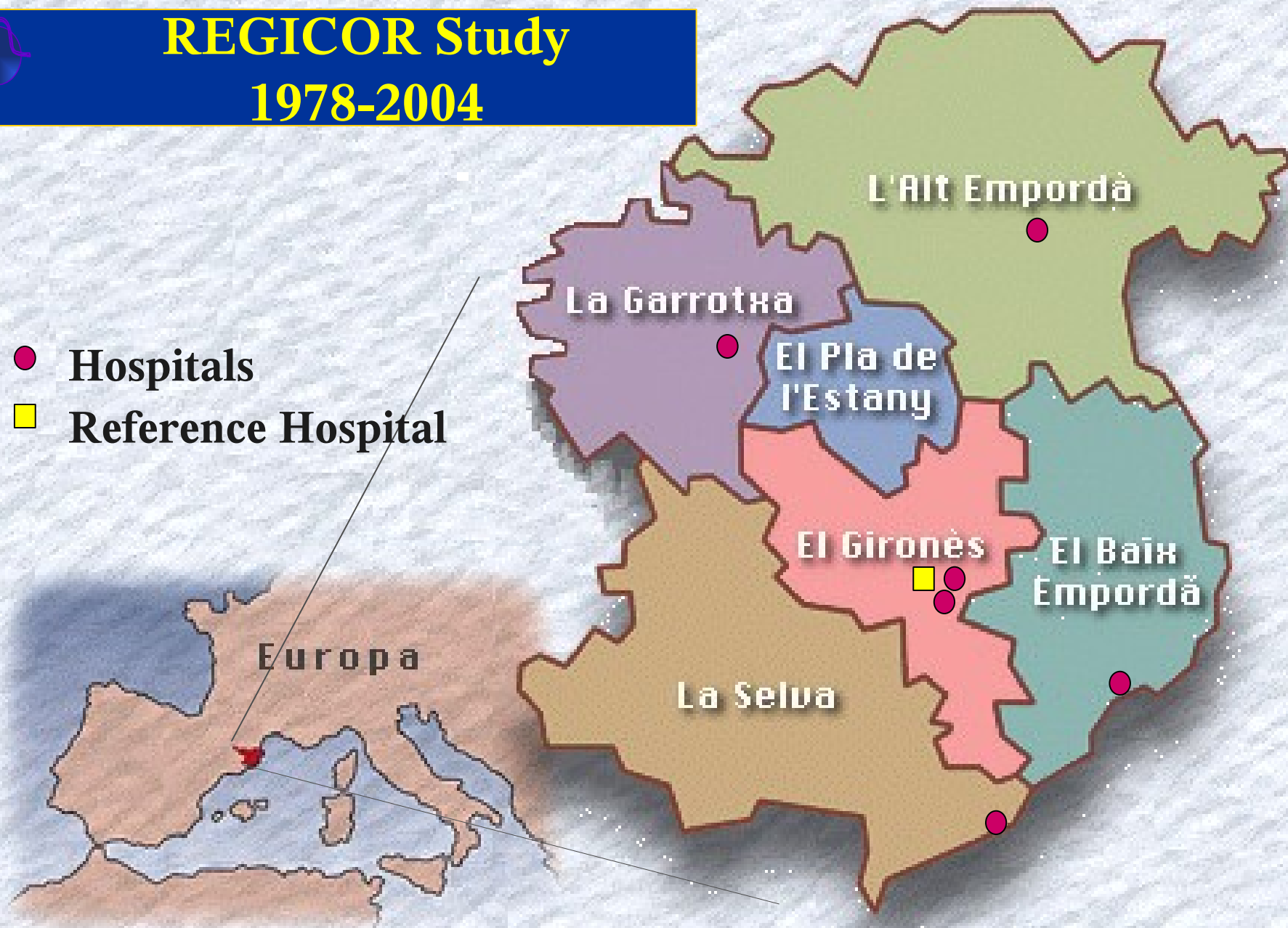
# Lipids and Cardiovascular Epidemiology Unit

---

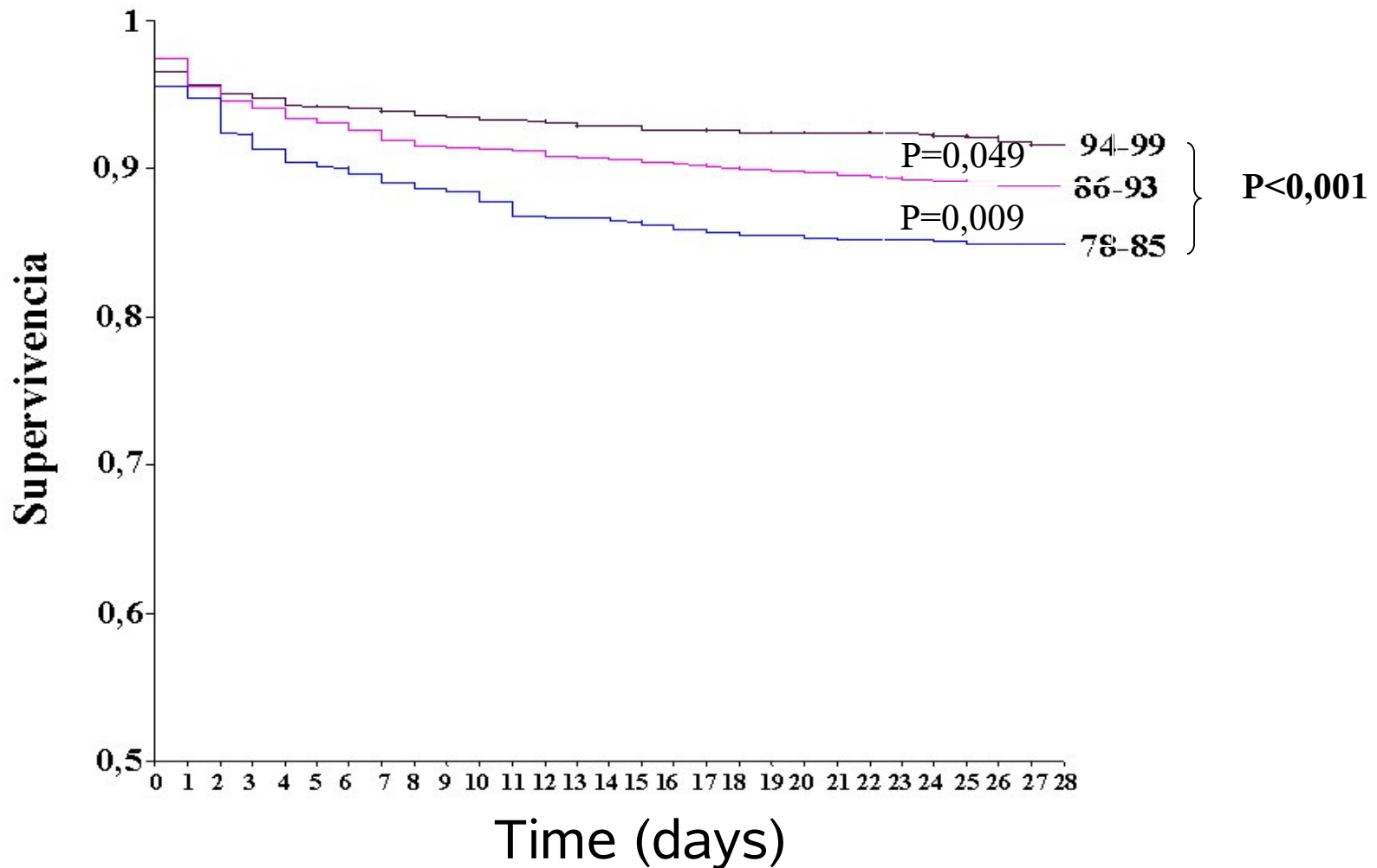
- A multidisciplinary research unit:
  - Epidemiologist
  - Clinician: Cardiology, Neurology, ...
  - Basic researchers
- Main areas of interest
  - Diet and Oxidative Stress
  - Genetic Epidemiology
  - Clinical Cardiovascular Epidemiology

# REGICOR Study 1978-2004

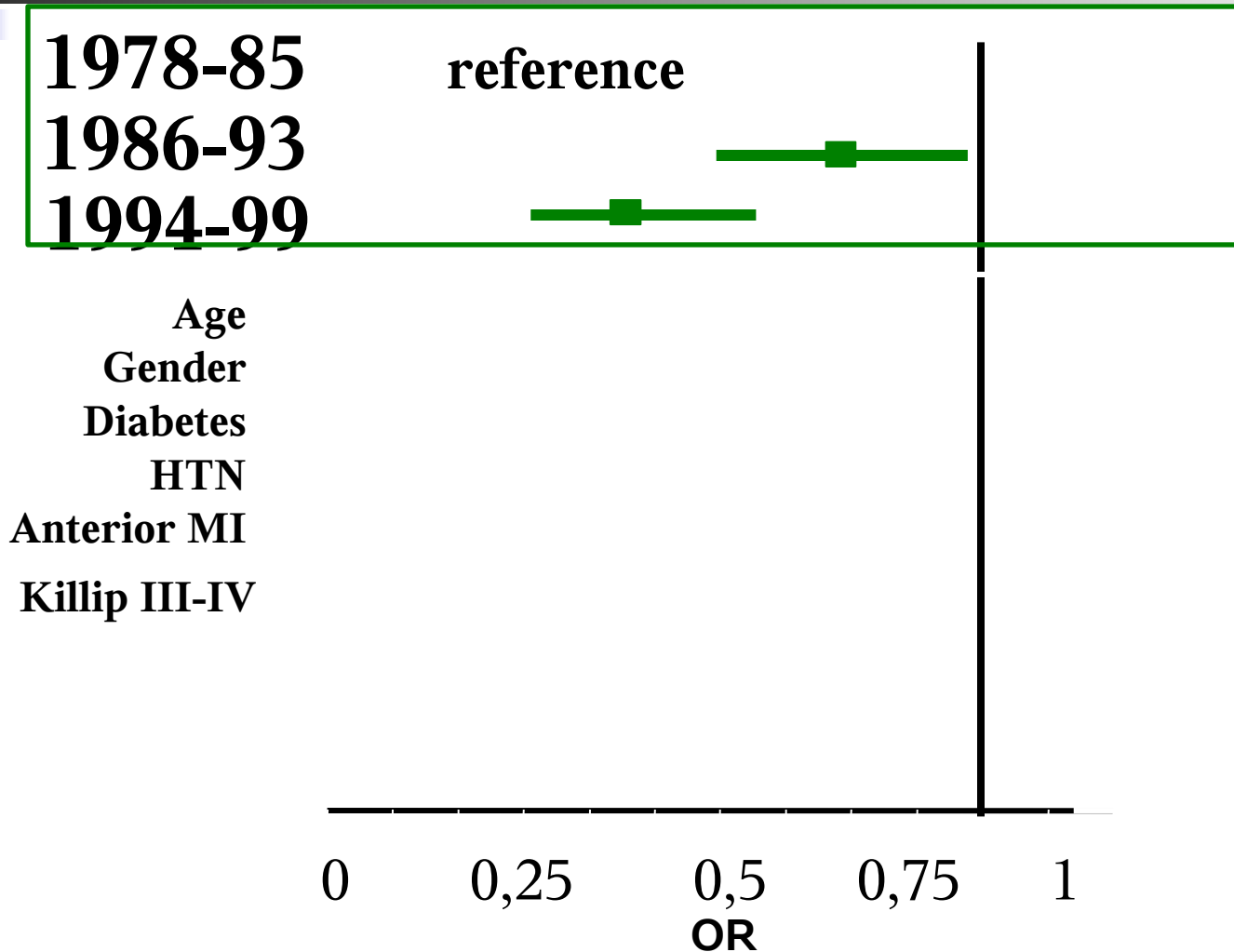
- Hospitals
- Reference Hospital



# 28-day case-fatality according to different time periods



# Comorbidity and severity adjusted OR for 28-day case-fatality in different time periods



# Treatment, comorbidity and severity adjusted OR for 28-day case-fatality in different time periods

1978-85

reference

1986-93

1994-99

Age

Gender

Diabetes

HTN

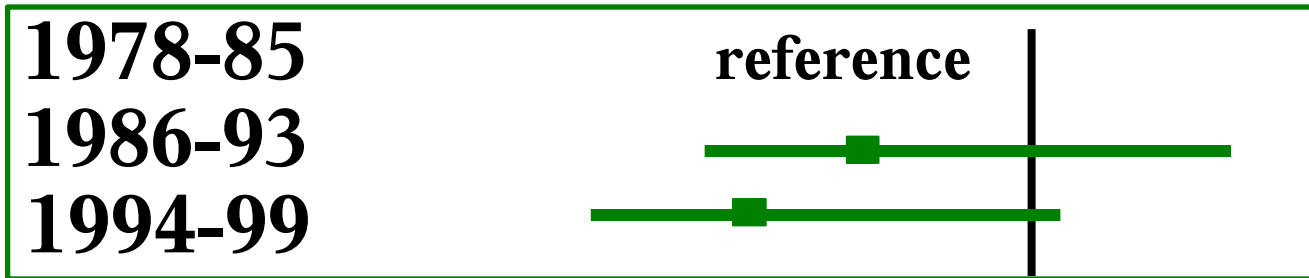
Anterior MI

Killip III/IV

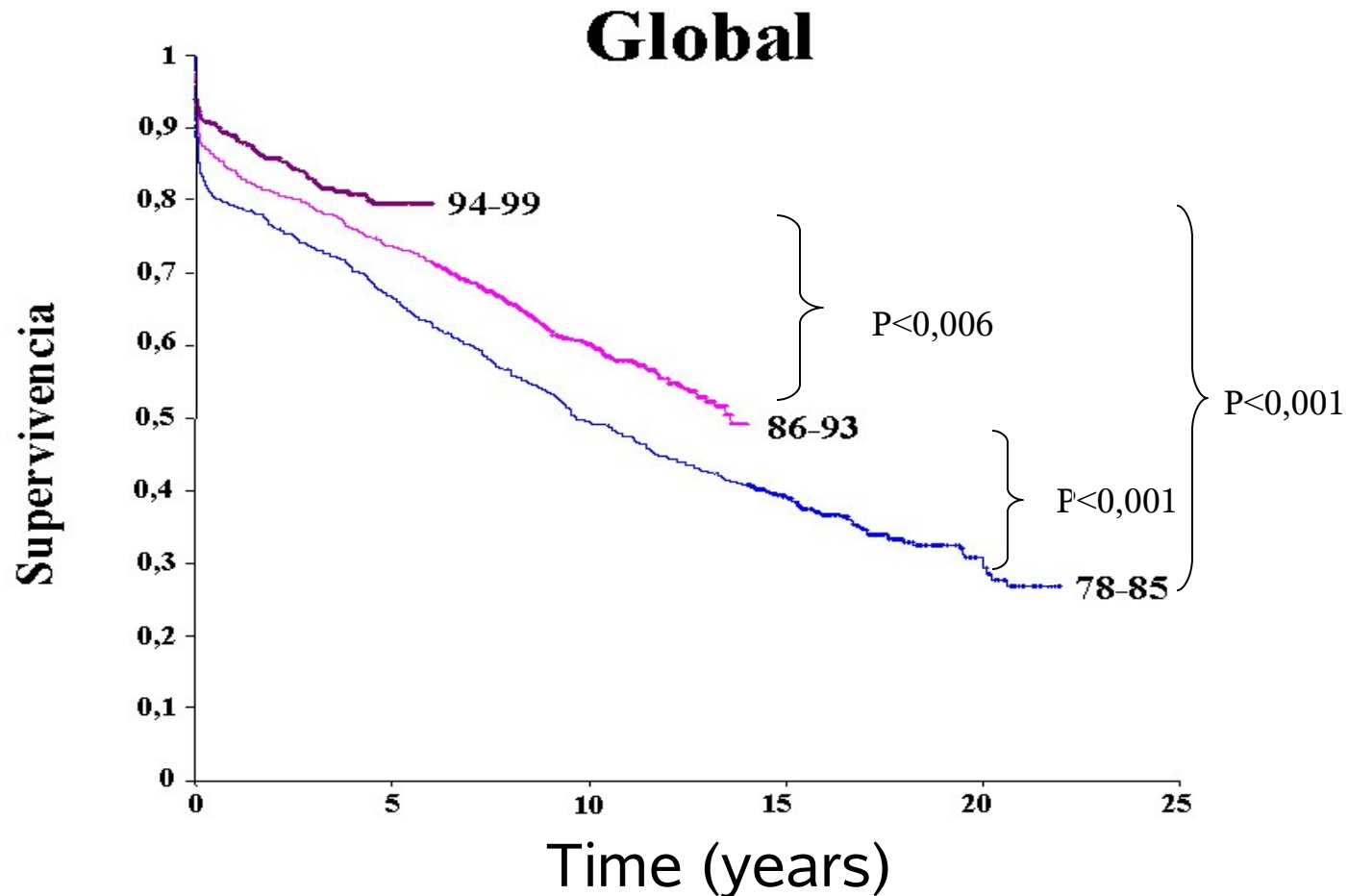
Thrombolysis

Aspirin

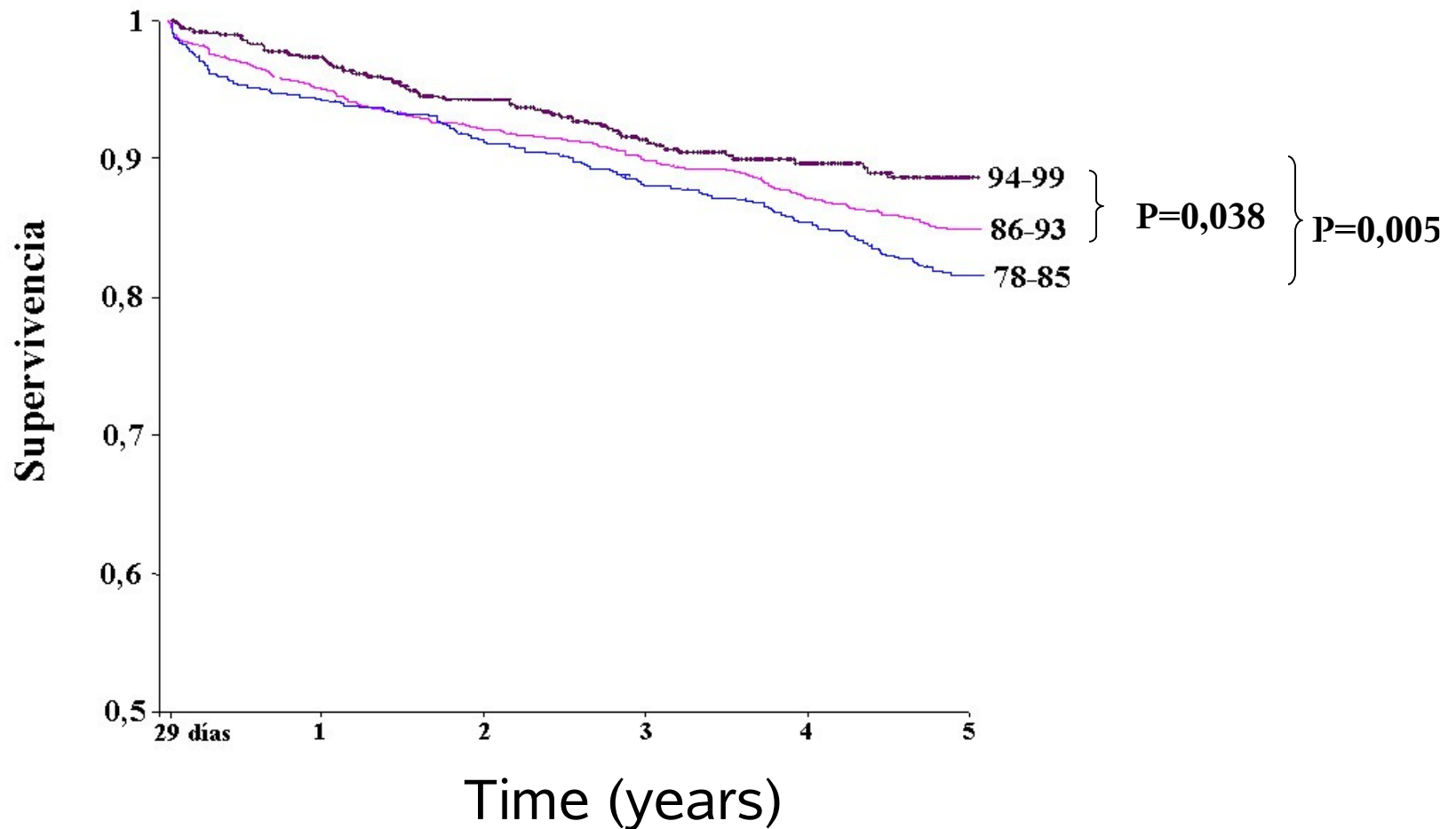
0 0,25 0,5 0,75 1 1,1 1,2  
OR



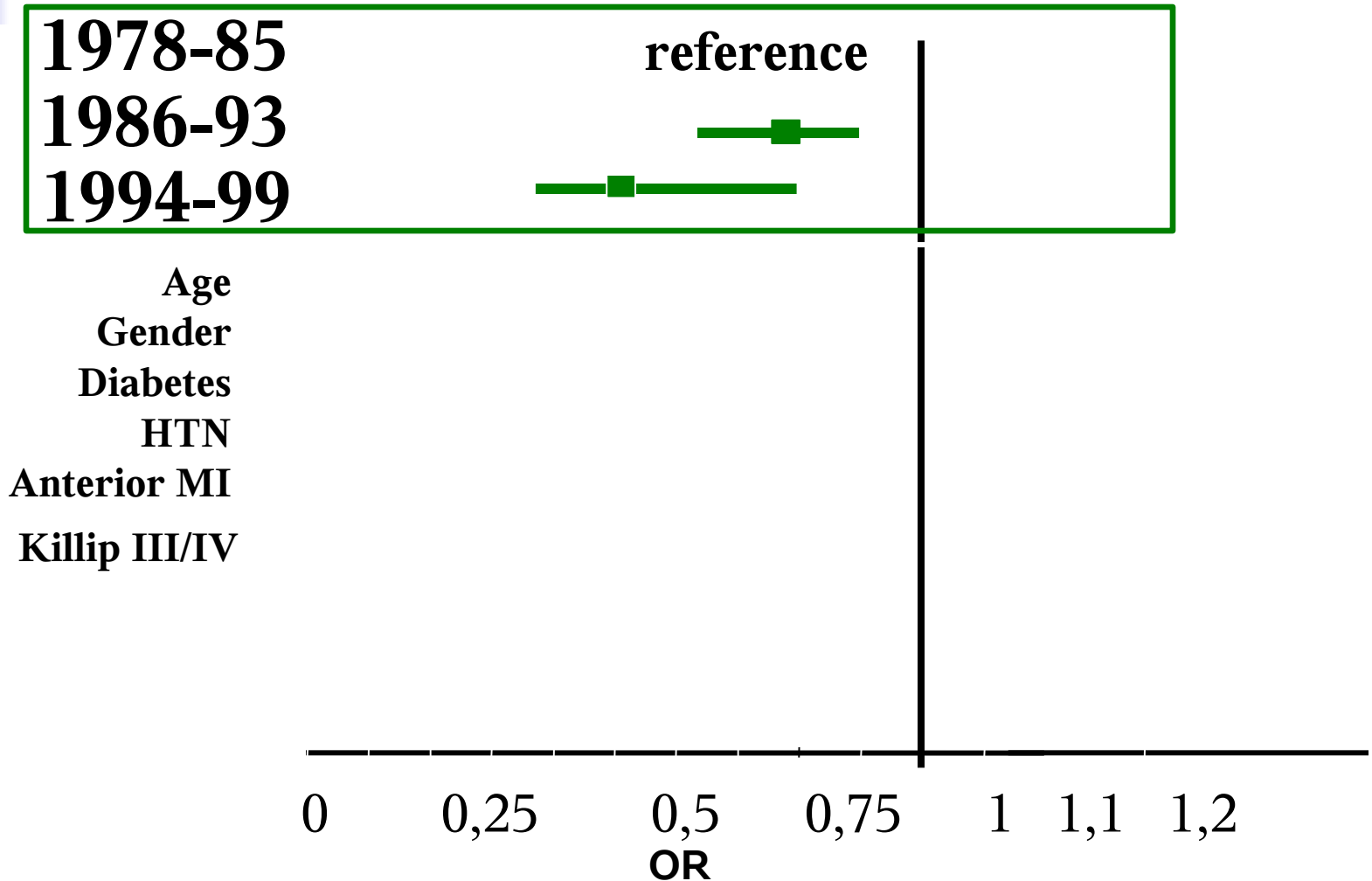
# Long-term mortality in MI patients according to different time periods



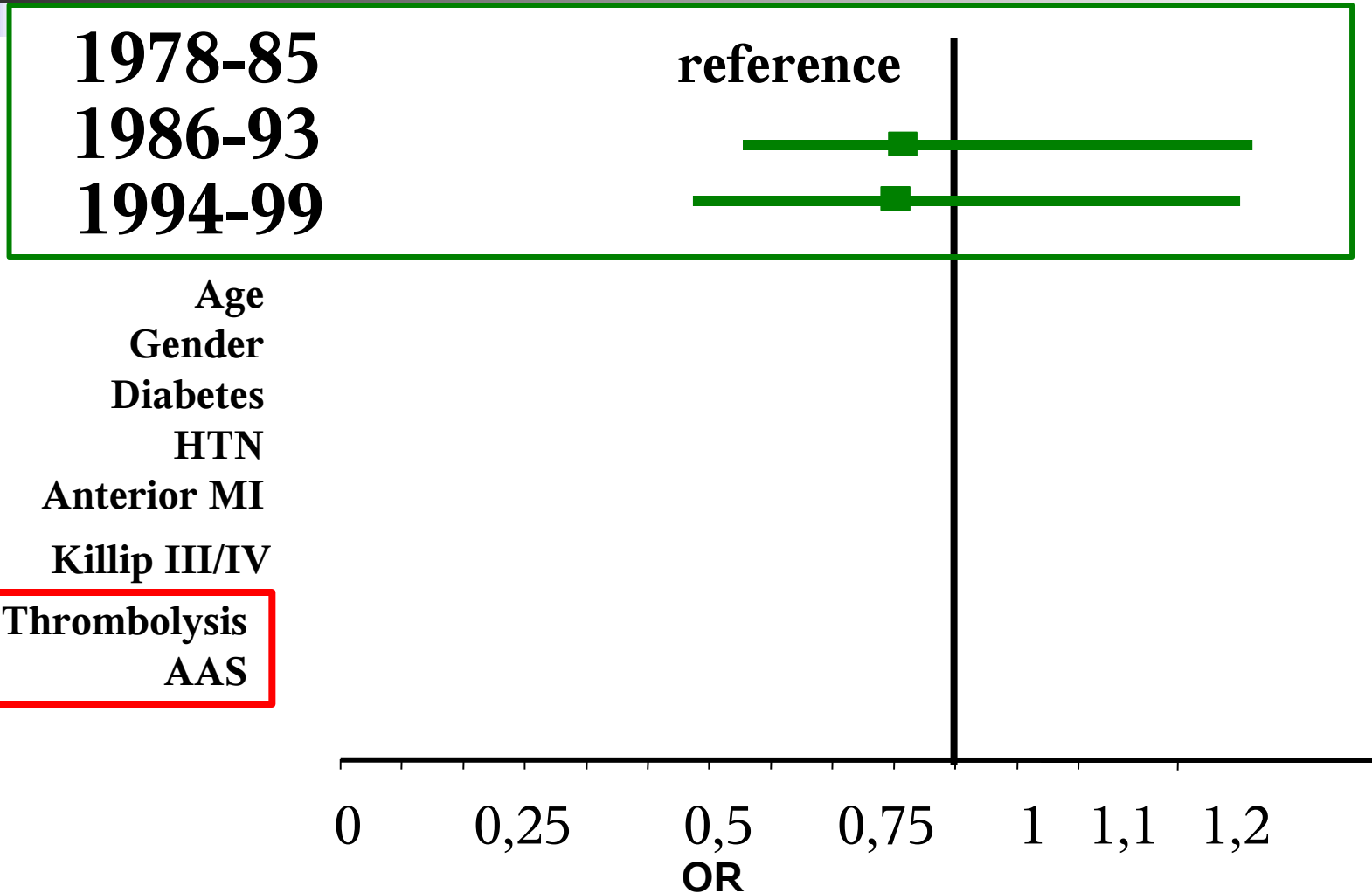
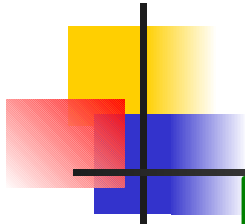
# 5-year mortality in 28-day survivors according to different time periods



# Comorbidity and severity adjusted OR for 5-year mortality in different time periods



# Treatment, comorbidity and severity adjusted OR for 5-year mortality in different time periods

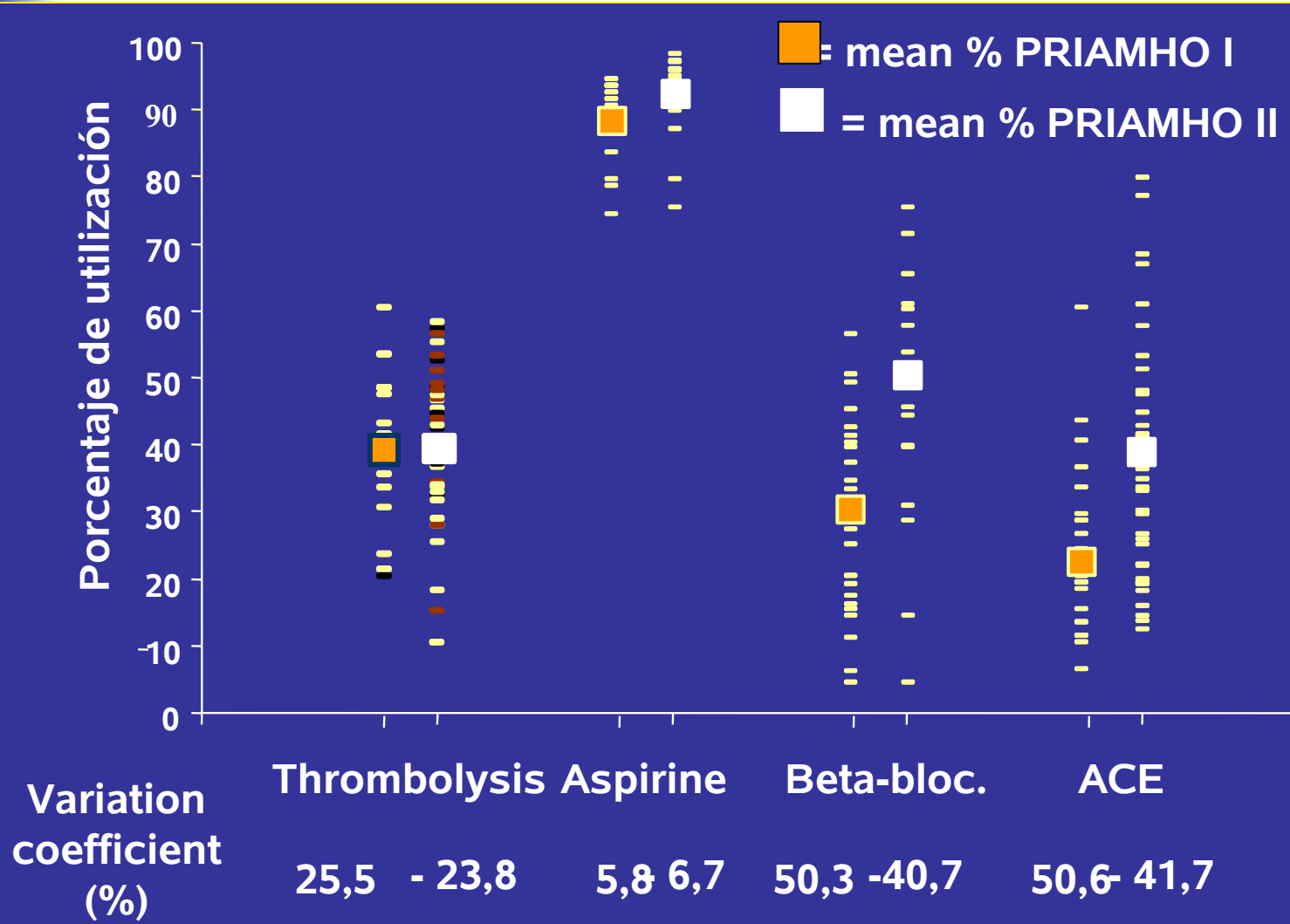


# PARTICIPANT HOSPITALS IN THE SPANISH NATIONAL MYOCARDIAL INFARCTION REGISTERS

n=62 (PRIAMHO STUDY I: 1994 / PRIAMHO II: 1999)



# Variability in the use of four treatments among hospitals in Spain (1994 and 1999)





# The *EUPHORIC* Study

---

- Valid and comparable information on acute coronary syndromes:
  - Case-fatality
  - Use of different treatments
  - Effectiveness of these treatments
- ... in the EU, to identify common elements suitable for a political EU platform oriented at best practice guarantees for the EU citizens.